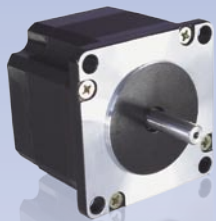


5718



- High Torque
- High Resolution
- Custom Windings Available (No Additional Cost)

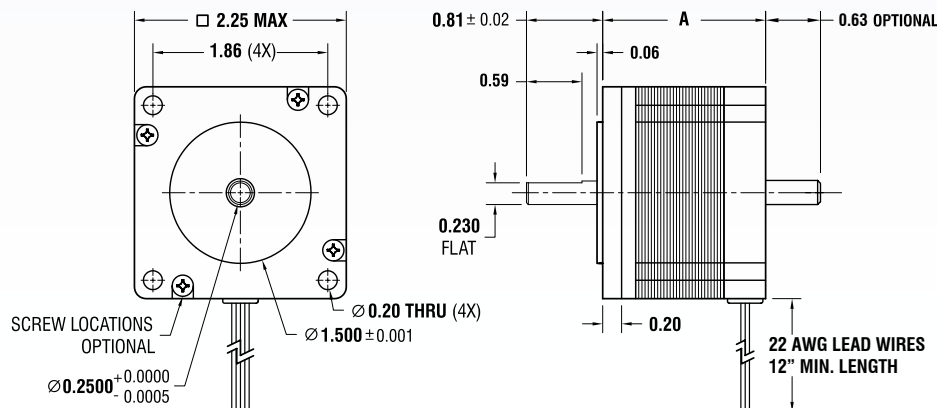
■ SPECIFICATIONS

BIPOLAR	Dimension "A" Max	Model #	Amps/Phase	Torque oz-in	Torque N-m	Resistance Ohm/Phase	Inductance mH/Phase	Inertia oz-in ²	Weight Lbs.	Number of Leads
1.74" 44.2 mm		5718X-01S	1.40	100.0	0.71	2.8	5.6	0.70	1.05	4
		5718X-01P	2.80	100.0	0.71	0.7	1.4	0.70	1.05	4
		5718X-05S	0.70	100.0	0.71	10.0	16.8	0.70	1.05	4
		5718X-05P	1.40	100.0	0.71	2.5	4.2	0.70	1.05	4
		5718X-15S	2.10	100.0	0.71	1.2	1.6	0.70	1.05	4
		5718X-15P	4.20	100.0	0.71	0.3	0.4	0.70	1.05	4
2.2" 55.9 mm		5718M-02S	2.10	173.0	1.29	1.8	5.2	1.50	1.50	4
		5718M-02P	4.20	173.0	1.29	0.5	1.4	1.50	1.50	4
		5718M-04S	0.70	173.0	1.29	14.0	42.3	1.50	1.50	4
		5718M-04P	1.40	173.0	1.29	3.5	10.6	1.50	1.50	4
		5718M-05S	1.40	173.0	1.29	3.6	10.0	1.50	1.50	4
		5718M-05P	2.80	173.0	1.29	0.9	2.5	1.50	1.50	4
3.08" 78.2 mm		5718L-01S	1.40	294.0	2.08	4.5	15.3	2.60	2.20	4
		5718L-01P	2.80	294.0	2.08	1.1	3.8	2.60	2.20	4
		5718L-03S	2.10	294.0	2.08	2.4	7.0	2.60	2.20	4
		5718L-03P	4.20	294.0	2.08	0.6	1.8	2.60	2.20	4
		5718L-04S	3.30	294.0	2.08	1.0	5.2	2.60	2.20	4
		5718L-04P	6.50	294.0	2.08	0.3	1.3	2.60	2.20	4

UNIPOLAR	Dimension "A" Max	Model #	Amps/Phase	Torque oz-in	Torque N-m	Resistance Ohm/Phase	Inductance mH/Phase	Inertia oz-in ²	Weight Lbs.	Number of Leads
1.74" 44.2 mm		5718X-01	2.00	72.0	0.51	1.4	1.4	0.70	1.05	6
		5718X-05	1.00	72.0	0.51	5.0	4.2	0.70	1.05	6
		5718X-15	3.00	72.0	0.51	0.6	0.4	0.70	1.05	6
2.2" 55.9 mm		5718M-02	3.00	130.0	0.92	0.9	1.4	1.50	1.50	6
		5718M-04	1.00	130.0	0.92	7.0	10.6	1.50	1.50	6
		5718M-05	2.00	130.0	0.92	1.8	2.5	1.50	1.50	6
3.08" 78.2 mm		5718L-01	2.00	210.0	1.48	2.3	3.8	2.60	2.20	6
		5718L-03	3.00	210.0	1.48	1.2	1.8	2.60	2.20	6
		5718L-04	4.67	210.0	1.48	0.5	1.3	2.60	2.20	6

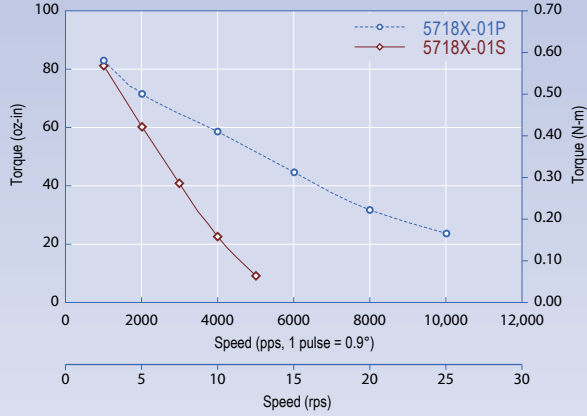
- * Please complete our application data sheet for different windings.
- * Power supply voltage can be any value as long as the driver output current is controlled at the rated current.
- * Call Lin Engineering for additional bipolar torque curves.
- * Performance, use, and appearance specifications of the products listed here are subject to change without notice.
- * For operating temperatures, see page 94.

■ DIMENSIONS (inches)

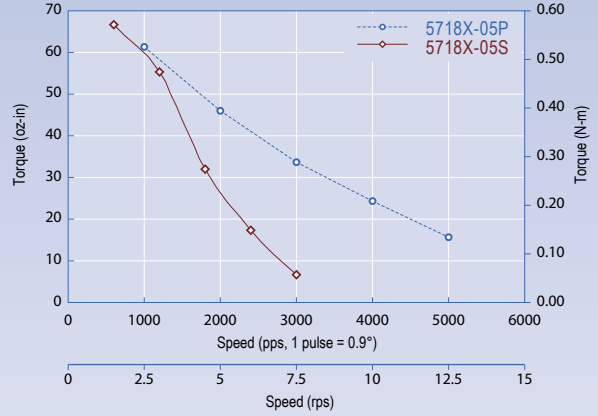


TORQUE CURVES

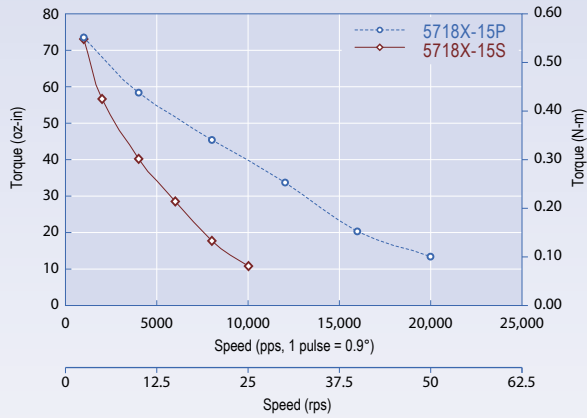
5718X-01S 24vDC, 1.4 Amps/Phase, Bipolar Series, 1/2 Stepping
5718X-01P 24vDC, 2.8 Amps/Phase, Bipolar Parallel, 1/2 Stepping



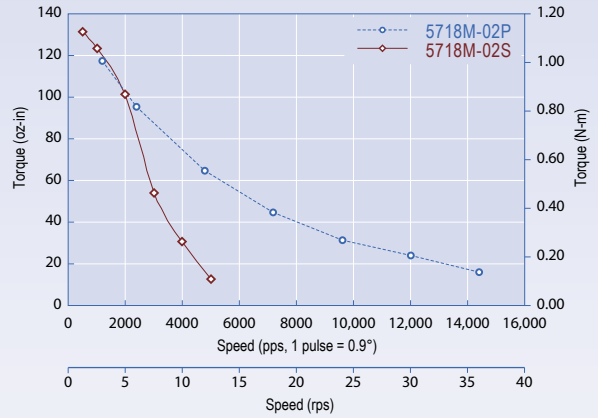
5718X-05S 24vDC, 0.7 Amps/Phase, Bipolar Series, 1/2 Stepping
5718X-05P 24vDC, 1.4 Amps/Phase, Bipolar Parallel, 1/2 Stepping



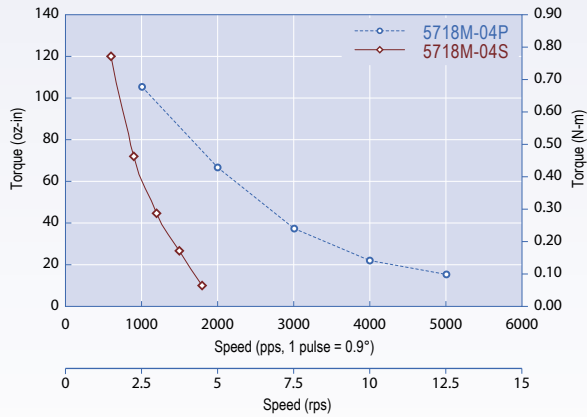
5718X-15S 24vDC, 2.1 Amps/Phase, Bipolar Series, 1/2 Stepping
5718X-15P 24vDC, 4.2 Amps/Phase, Bipolar Parallel, 1/2 Stepping



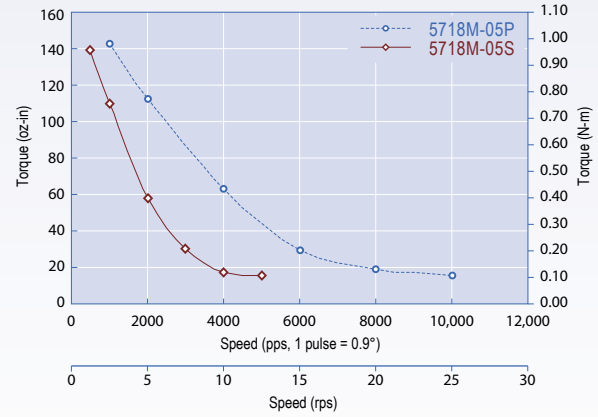
5718M-02S 24vDC, 2.1 Amps/Phase, Bipolar Series, 1/2 Stepping
5718M-02P 24vDC, 4.2 Amps/Phase, Bipolar Parallel, 1/2 Stepping



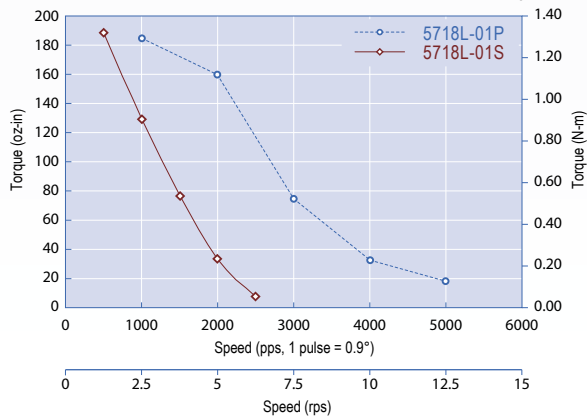
5718M-04S 24vDC, 0.7 Amps/Phase, Bipolar Series, 1/2 Stepping
5718M-04P 24vDC, 1.4 Amps/Phase, Bipolar Parallel, 1/2 Stepping



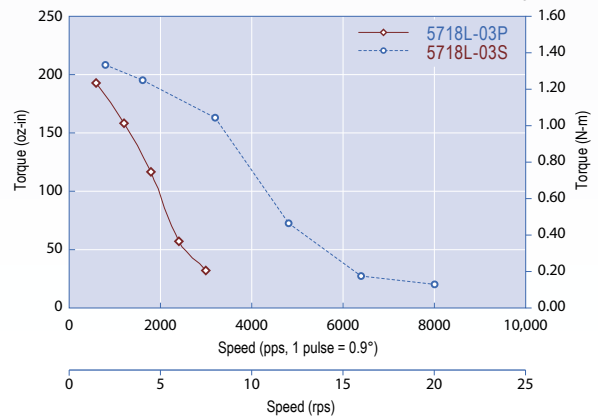
5718M-05S 24vDC, 1.4 Amps/Phase, Bipolar Series, 1/2 Stepping
5718M-05P 24vDC, 2.8 Amps/Phase, Bipolar Parallel, 1/2 Stepping



5718L-01S 24vDC, 1.4 Amps/Phase, Bipolar Series, 1/2 Stepping
5718L-01P 24vDC, 2.8 Amps/Phase, Bipolar Parallel, 1/2 Stepping



5718L-03S 24vDC, 2.1 Amps/Phase, Bipolar Series, 1/2 Stepping
5718L-03P 24vDC, 4.2 Amps/Phase, Bipolar Parallel, 1/2 Stepping



1.8°
SIZE 23

INTEGRATED
MOTORS

CUSTOM
DESIGNS

ACCESSORIES

RMS
TECHNOLOGIES

TRINAMIC